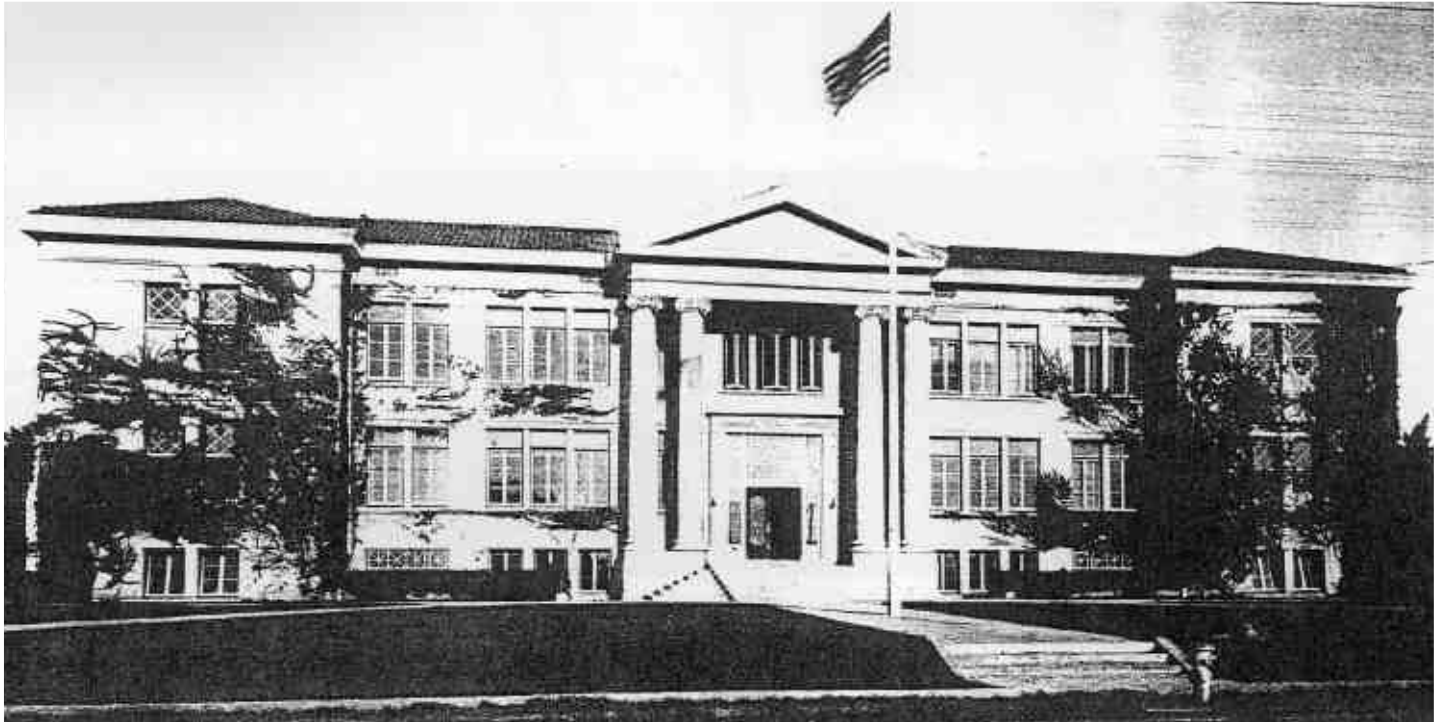


BLUFF HEIGHTS QUARTERLY

Neighborhood News Delivered Right to Your Door!

Winter 2010

Local Profile: Horace Mann Elementary



Early picture of Horace Mann School, built in 1914.



Horace Mann

1796-1859

"We are proud to be one of those schools, and we shall try to uphold the high standards which he gave to us: honesty, responsibility, patriotism, respect for the rights of others, cooperation, and good study habits."

Also in this issue:

Protect your home from burglary • Immanuel Church • Healthy and fun bag lunches

www.bluffheights.org



BHNA PRESIDENT'S MESSAGE

George Edinger, BHNA President

Dear Bluff Heights Residents,

On behalf of the Board of Directors of the Bluff Heights Neighborhood Association, we would like to wish you all a very Happy New Year. With the New Year in mind, the BHNA Board of Directors met in the month of November for our strategic planning session for 2010. At that planning session, we determined that the theme for 2010 is "Back to Basics." This year we will focus our 100-percent volunteer Board efforts on the following basic principles to further strengthen the mission of the BHNA.

Maintaining and Attracting Board and Committee Members

This year the board will focus its attention on the individual blocks that make up our great neighborhood. We would like to meet with representatives from each block and assign a block head for that street. This person or family would be the liaison between your block and the Board of Directors. Responsibilities would include, code concerns, crime, abandoned property, and public safety. If you would like to become the block head of your street, please let us know.

Horace Mann Elementary School

Bluff Heights respectfully does not contain a park or public space that we can call our own. The BHNA and residents of Bluff Heights have always used Horace Mann as the anchor of our neighborhood — a place where we can meet as a community and talk with our neighbors. We will continue to raise money for Horace Mann through various events throughout the year.

Neighborhood Watch

As our country climbs out of our current recession, the budgets of our city and police department will continue to be suppressed. As a result we feel that there is no better time to reinstitute the familiar Neighborhood Watch on each and every street in our neighborhood. We must remain vigilant of our surroundings to ensure the stability of our neighborhood and property values for years to come.

Education

We will continue our education efforts through our newsletters and Neighborhood Forums on the issues that matter the most to you. We are currently devising plans to make the meetings more family friendly and enjoyable for all to increase participation at all levels.

We are reviewing the options of a "green" newsletter and discount cards to local businesses for members as well.

Fundraising for Neighborhood Beautification

This year we will continue our work on the Welcome to Bluff Heights Monument sign that will someday soon welcome everyone to our beautiful historic district.

We would like to ask you for your help this year. Please get involved in your community in any way you can. Together we can make a difference.

George Edinger

President, Bluff Heights Neighborhood Association



Important Phone Numbers

Emergency	911
Police Non-Emergency	435-6711
Airport Noise Abatement	570-2678
Animal Control	570-PETS
Apartment Watch	570-7160
Business Watch	570-7274
BHNA	439-BHNA
Bob Foster (Mayor)	570-6801
City of Long Beach Info.	570-6555
City Council (District 3)	570-6310
Code Enforcement	570-CODE
Fire Prevention	570-2560
Gang Hotline	(866) 426-4847
Gary DeLong (Dist. 3)	570-6300
Gas Emergency	570-2140
Graffiti Hot Line	570-2773
Hate Crimes/Human Dignity	570-6948
Health Department	570-4000
Historic Preservation Office	570-6194
Housing Rehabilitation Loans	570-6808
Narcotics Tip Line	570-7125
Neighborhood Watch	570-7229
Noise Abatement	570-4126
Public Works	570-6383
Sidewalk Hot Line	570-6264
Shopping Cart Hot Line	(800) 252-4613
Special Refuse Pick-ups	570-2876
Street Lights	983-2000
Street Potholes Hot Line	570-3259
Suja Lowenthal (Dist. 2)	570-6684
Street Sweeping	570-2890
Tree Trimming	570-2700
Water Emergency	570-2300
Community Hospital	498-1000

All telephone numbers are area code (562) unless otherwise listed.

Bluff Heights Quarterly Volunteers

- ◆ Advertiser Sales: Dale Maul
- ◆ Editorial Coordinator: Bill Garlin
- ◆ Copy Proofing: George Edinger
- ◆ Web Site: ZephyrGraphics.com
- ◆ Newsletter Layout: Claire Atkinson

NEIGHBORHOOD FORUM
JANUARY 20, 2010
7 P.M. AT HORACE MANN
ELEMENTARY

Zephyr Graphics
& Web Design

Our service will blow you away!

Caitlin Crest
562-438-8330
www.ZephyrGraphics.com

Your Neighborhood
Graphic & Web Designer

IMMANUEL CHURCH, A NEW COMMUNITY CENTER

by Rev. Dr. Jane Galloway, spiritual director

Imagine a place in your neighborhood where you can attend a top notch production of a new play, hear a chamber music concert, see an opera, poetry slam or dance event, browse in a bookstore, with a cup of coffee while you work on your computer and catch up with a friend..

Imagine a Center where community youth are learning conservatory level art, drama, music, dance, martial arts, healthy cooking or training in an exercise physiology lab.

Imagine a community state of the art commercial kitchen and dining facility in your neighborhood...one which you can rent for your special event or business meeting.

Now imagine the design of this Center being a sensational Adaptive Re-Use of the historic Immanuel building, bringing out the most wonderful historic qualities, updating the access, aesthetics and energy sources.

And now imagine the pride of having this be your Community Center...an anchor at the Northeast corner of Bluff Heights, to announce and define the neighborhood we know and love.

Times have changed since 1922, but people really haven't changed all that much. We still need a place to get together with one another. We all still need community.

Almost 90 years ago, a group of Long Beach residents built a beautiful church in their community. The original Immanuel families were Baptist, and were taking a big trip out of the center of the City to move into the un-incorporated area we know as Bluff Heights.

The original building was damaged in the 1933 earthquake, but the membership engaged in an all out three year campaign to raise sufficient funds to both restore and expand their community center/family gathering place/church.

So now think of this...They met for almost a year in a tent in the lot adjacent to the current church lot. They actually owned all three adjacent lots! Imagine having that much empty space!

When it got too cold to meet outside, they moved into the basement and held services there until their new and improved sanctuary was restored and ready to open.

Generations grew up within the walls. The members lived within walking distance, so anniversaries, graduations and weddings were community events. 400 people could fill the spacious basement

catering facility, and the tables gleamed with silver and crystal and the halls rang with life.

In the 1960's, many churches went through a sea change. Immanuel was no different. It managed to stay open, but only barely.

In 2000, we looked at how we could restore Immanuel to a vibrant community resource serving the school, the neighborhood and the members.

We have developed a wonderful relationship with Horace Mann Elementary. Our Arts non-profit, h'ARTworks, has provided art and drama classes, a computer lab, hosted the 5th Grade Promotion ceremonies and now the symphony and choral concerts for the school- all at no cost to the school district. We have tried to create a place which can again serve as the common living room of our community.

Community...in challenging times there is nothing like it.



I teach you how to solve your dog problems in ONE session.

- 🐾 Dog Training
- 🐾 Personalized Dog Walks
- 🐾 All Pet Sitting

Cammie Lusko
Bonded • Licensed • Insured
(562) 833-3476
email: CampCammie@yahoo.com



a home furniture, lighting, art & accessories boutique
3237 E. Broadway Ave. Long Beach, CA 90803 (562) 434-8824

www.SashasLivingWithStyle.com

www.SashaWitteDesign.com

IMMANUEL A Center for Conscious Living New Thought - Ancient Wisdom in Long Beach

Rev. Dr. Jane S. Galloway, Spiritual Director

**Sunday - 10:30 am Meditation
11:00 am Celebration Service**



3215 E. 3rd Street, Long Beach, CA 90814
(enter on Obispo)
562-438-2931 ~ www.icclb.org

HORACE MANN ELEMENTARY SCHOOL

School Description and Mission Statement (School Year 2007-08)

Horace Mann Elementary School is on a traditional school calendar and offers a rigorous and challenging instructional program for students in kindergarten through fifth grade. It offers Accelerated classes to students in grades 3-5. Mann serves approximately 400 students.

Writer, Mychal Wynn, best sums up the mission of Horace Mann Elementary School this way: The school is "A place where dreaming is encouraged, not discouraged. Where dreaming is supported, not condemned. Horace Mann is a place where ideas are developed and opportunities are discovered." Mann's vision is to provide a challenging educational program to each and every child attending the school. The staff provides a positive school climate and emphasizes positive character education traits daily in their classrooms.

Horace Mann's Principal Wanda Oliver by Antonio Cruz

Wanda Oliver was born and raised in Los Angeles. She attended schools in the Los Angeles Unified school system and earned her teaching credentials at Cal State Los Angeles. Wanda is a mother of two successful daughters. Her oldest daughter, Rayna, is a social worker and graduate of Cal State Dominguez Hills. Her youngest daughter, Britney, is a recent graduate of Cal State Long Beach. Wanda has been married for 34 years, is very close to her family and looks forward to spending time with them during the holidays or her time off.

Wanda enjoys reading and making latch hook rugs. She has a fond appreciation for arts and crafts. Wanda's real passion in life is helping kids develop into scholars and building a personal relationship with all the kids that come through the doors of Mann Elementary. It's very important for her to know students and parents by their first names. It is a real joy when a graduate of her school returns to visit her and their old campus.

Her teaching career began in special education where she kept her focus for 18 years. Later, she taught at Lowell Elementary and Rogers Middle Schools. She worked as a program facilitation

Instruction is given through a variety of techniques including tutoring. Computers are available in every classroom.

Source: <http://www.lbusd.k12.ca.us/>

Key Dates

1914 – School opened with 400 students in 8 grades

1921 – A 2-story brick building added with many novel features

1933 – School destroyed by the Long Beach earthquake

1936 – New, concrete reinforced building opened and is still in use today

1950's – "Cafetorium" added, combining a cafeteria and an auditorium

1976 – The school celebrated the American Bicentennial by making a special 200th Birthday quilt

Today – Home to approx. 400 students in grades K through 5

specialist before becoming a principal. This is Wanda's fourteenth year as a school principal and her ninth year as the principal at Mann Elementary. Wanda has overseen schools with large populations of 1,000 kids down to her current population size of 400 students. She enjoys the small school population of Mann Elementary and feels a special connection to the students and their families.

Mrs. Oliver has made great strides in lifting her school's annual performance in the last decade and looks forward to continuing the positive momentum. She would enjoy seeing the community of Bluff Heights come out and share their talents and skills with the students at Mann Elementary. She invites you to come to school and read to the children, scrap book and knit with them, or join in a game of kickball. These are all ways to support the school and make a lasting difference in our children's lives. Due to recent budget cuts and more to come, Wanda knows that now more than ever is the time for neighborhood residents to be a vital resource for the school and help the students and teachers of Mann Elementary.

Our story: Mann Elementary was the right school for us by Antonio Cruz

When driving past the school it's easy to see the lack of green space and the tall cage fencing and that leaves a lot to be desired when it comes to the physical appearance of the school. The unique demographic in comparison to neighboring schools such as Lowell or Fremont Elementary shows a much less homogenized

school population. Parents aren't hustling and bustling around the school in their new fancy cars picking up their kids after school. More importantly the API scores for the school were low. Are these the reason that neighborhood parents aren't considering Mann Elementary as a school of choice? Do all these things make the school less desirable to parents?

Notable Achievements

- **Benchmark reading scores improved from 75% in 2000 to 86% in 2009, meeting or exceeding the LBUSD standards**
- **Mann Elementary has been awarded the LBUSD Star Award**
- **Mann Elementary has received five California Academic Achievement awards between 2003 and 2007**

To be honest, I wasn't sure about the school either. My neighbors had nothing positive to say about the school. Our real estate agent suggested we look to other schools in the district and not send our children to Mann Elementary. Based on all the info that was fed to us and the fact that our older children attended Fremont Elementary, we decided to

try and send our youngest son to Fremont too.

In preparation for kindergarten, we petitioned to get our son on the waiting list at Fremont with about a hundred other parents. I had a feeling that it wasn't going to happen for our little guy. A couple of weeks later we were faced with the reality that Fremont Elementary was not going to be an option. My wife and I felt a bit of a panic after getting the disappointing news knowing that Mann, the school everyone seemed to overlook, was our only option. Then it finally hit me. Why shouldn't we be happy with sending our son to our neighborhood school? It seemed small enough to where our son could get to know everyone and it's a very convenient one-block bike ride to and from school every day.

Faced with this temporary defeat I decided to make our son's kindergarten year at Mann Elementary the best it could be. My wife and I helped out in the classroom two to three times a week. As I got to know the school better I began to notice some disconnect between the school and the surrounding Bluff Heights community.

After one year at Mann, my wife was again ready to look at other schools for first grade. She felt that we had done our time at Mann. She did not feel the same connection with the teachers and parents like she did at other schools in the district nor did she see the same school pride. Attending elementary school in Long Beach herself, she holds a strong connection to the city. She maintains friendships she built in elementary school still to this day.

I wasn't ready to give up on the school yet. I wanted a chance to help the school as much as I could and change the way our community views the school. I attended my first PTO (parent teacher organization) meeting, which featured a short PowerPoint on quick fixes to help improve the school's appearance and environment. It ranged from organizing a new valet system for the school to asking the principal to walk the school grounds to greet families before and after school to foster a warm and friendly atmosphere for our students and the community. It's never easy to point out what's not working

and ask people to change their work habits, but I felt it was the only approach to making a difference.

After becoming PTO president, I asked for the principal to come up with an action plan. The school was struggling with issues such as enforcing the student dress code, friendly and professional service from the office administration, an antiquated computer lab, and limited P.E. classes to name a few. Collectively, we came up with a lot of good solutions to slowly transform the 2009-2010 school year.

With the growing number of new families in Bluff Heights (including five on my street alone), the changes couldn't have come at a better time. I've reached out to council members Suja Lowenthal and Gary Delong for support and advice on how to make the right changes. They have both been very supportive in attending school functions and connecting the school with the Long Beach Community Foundation in efforts to enhance the school's ability to purchase new learning tools. A major momentum shift for the school came via the Long Beach Assistance League's "Operation School Bell" program, which donated \$17,000 worth of uniforms, backpacks, and school supplies to all students at Mann Elementary. This made the students feel more welcome and proud of their school. The Immanuel Church on 3rd and Obispo Ave. is also a great school partner. The church, run by Pastor Jane, hosts art and drama programs at the school and holds the fifth grade graduation ceremony each year.

As we are halfway through the 2009-2010 school year, I can now say that with all the community support and strong school leadership, Mann Elementary will be the neighborhood school that you too will want your child to attend. I encourage all new parents and Bluff Heights residents to take the time to visit the school. As a community we can make it our own — we can make it the school in Long Beach Unified School District that all parents want to their children to attend. Become a volunteer and help our children learn and thrive.

got real estate?



Michael Barber
DRE #01332558

**Long Beach
and
Palm Springs
Area Specialist**

562.659.3057 or 760.285.9899
website4realestate.net
michaelbarber10@aol.com

**MAIN STREET
REALTORS**

ALERT: Bluff Heights Neighborhood Association Wants You to Protect Yourself Against Home Burglary

With the current increase in burglaries in our Bluff Heights neighborhood, a break-in can permanently shatter your feeling of security at home, whether you live in a house, a condo or an apartment.

According to FBI statistics, a house, apartment or condominium is burglarized once every 15 seconds in the U.S. Fortunately, burglary is probably the most preventable of crimes. By taking a few simple precautions, you can dramatically reduce the risks. Of course, every home and every situation is different, and there are no guarantees.

The first step is to determine what kind of threat you are trying to protect against. For example, defending against personal threats, such as assault, requires different measures than defending against burglary.

Most home burglars do not give great amounts of thought to planning the job and assessing the benefits vs. dangers, but understanding how they choose a target can go a long way in reducing your chances of being a victim.

Most burglars look for:

- * Something worth stealing
- * Easy access combined with low visibility
- * A home that is unoccupied

Did you know? More residential burglaries occur during the day because homes tend to be vacant more often.

How to prevent break-ins:

Fool them by making your home look occupied all the time.

- * Use automatic timers on lights when away from home.
 - * Always park your cars in the garage with the garage door shut.
- A burglar may otherwise notice a pattern that a closed garage door

or no cars in the driveway means no one is home. Closing the garage door and having curtains or blinds on the garage windows also hides some of your belongings.

* Place radios on automatic timers and raise the volume so they can be heard outside.

* Lower the sound of your telephone ringer and answering machine so that they can't be heard outside.

* Never leave notes on your door that can tip off burglars.

When away for more than a day:

* If possible, have your telephone calls forwarded when you are away from home. Burglars sometimes check to see if someone is home by making a telephone call.

* Have a trusted neighbor pick up the mail and newspaper. If possible, do not have either stopped. That gives information about you being away from home to others whom you do not know.

* If away for an extended period, have a plan in place to have the grass mowed or snow shoveled.

* If you are away from home on garbage pickup day, ask a trusted neighbor to put your garbage cans out to the street and take them back in. You may wish to have your neighbor use your garbage cans while you are out. Burglars sometimes check for empty cans as a sign the family is away.

* There are systems available that will open and close window draperies by timer. Constantly open or closed curtains can tip the burglar off that no one is home.

* Even if you don't need specific help, always tell a trusted neighbor if you are going to be gone for a few days.

* If you are going to be gone for an extended period, ask your local police to check your home periodically.

In short, make your house look the same whether you are away or at home.

Eliminate hiding places

* Make sure there is good lighting around the place where you park.

* Install motion detector lights around your house instead of just leaving lights on at night. The lights coming on and turning off attract the attention of neighbors. Install these lights at least 8 feet above the ground so they are more difficult to disable.

Please read the whole alert at <http://www.bluffheights.org/index.html>

Courtesy of State Farm Mutual Automobile Insurance Company - Copyright 2009 - Home Office, Bloomington, Illinois

Repair Your Windows! Don't Replace Them!

We Specialize in Older & Vintage Homes

WINDOW RESTORATION & REPAIR



(562) 493-1590

Local References Available

Repairing Windows is all we do!

www.window-restoration-repair.com

Receipt for Bluff Heights Historic District
Plaque Order



Date Purchased: _____

Amount \$ _____

Payment Method:

Check # _____

or

Credit Card Used: _____

(Visa or MC - last 4 digits)

Plaque Size: 10.75 x 11.75

Color: Black with gold letters

PICK UP FROM:

B & B Hardware

387 Redondo Ave., Long Beach, 90814

562-438-2669

Keep top portion for your records

BLUFF HEIGHTS HISTORIC DISTRICT PLAQUE ORDER FORM

Name: _____

Address: _____

Phone number: _____

E-mail address: _____

PAYMENT INFORMATION

Cost of Plaque: \$177.38 (includes tax & shipping)

Check made payable to: B & B Hardware

Credit Card payment available thru B&B: G Visa G MasterCard

Card Number: _____ Expiration: _____

PLAQUE INFORMATION

Date House was Built: _____

Plaque Size: 10.75 x 11.75

Color: Black with gold letters

THE BAG IS BACK . . . prepared lunches that your kid may actually eat!

Submitted by Frank Ginipro

Who said that eating school lunch had to be boring? Kids in Bluff Heights can, in the middle of the day, enjoy some interesting fare while still eating healthily. Following are a couple of unique recipes that Bluff Heights parents can use when preparing school lunches for their children. Also, there are some tips on food safety and food allergies, so don't forget to review that information as well. Viva la Brown Bag!

Banana Dog in a Bun

This is the coolest lunch ever, not to mention the easiest, and will be the envy of your kids' classmates. If peanut butter is off limits at your child's school, use cream cheese instead.

Ingredients

- 1 hot dog bun (whole wheat, if possible)
- 1 Tbsp. (15 mL) peanut butter (or cream cheese)
- 1 Tbsp. (15 mL) strawberry or other jam (or honey, if preferred)
- 1 whole banana raisins, shredded coconut or chopped peanuts

Cooking Instructions

Spread one inner surface of a split hot dog bun with peanut butter or cream cheese. Spread the other side with jam or honey. Wrap in plastic wrap and place in your child's lunch bag. Also, pack a whole banana (in the peel) and a small container of toppings, such as raisins, coconut, peanuts or whatever else you can think of. At lunchtime, your child can peel the banana and place it in the bun, sprinkle on the toppings and eat. Servings: 1

How Kids can Help: Spread peanut butter and jam on bun. Pack everything into lunch bag and assemble at lunchtime.

Turkey Sandwich Wrap

Looking to break out of your sandwich rut? This yummy tortilla wrap, stuffed with deli turkey or leftover roast turkey, tomato, spinach, provolone and Parmesan, makes a tasty alternative for your brown bag.

Ingredients

- 1 large (10-inch/25-cm) flour tortilla, regular or flavored
- 1 Tbsp. (15 mL) mayonnaise
- 1 Tbsp. (15 mL) grated Parmesan cheese
- 2 oz. (57 g) sliced deli turkey
- 1 Tbsp. (15 mL) chopped red onion
- 1/4 cup (50 mL) baby spinach leaves
- 1 oz. (28 g) sliced provolone, Swiss or cheddar cheese
- 2 thin slices tomato
- salt and pepper to taste

Cooking Instructions

In a small bowl, stir together mayonnaise and parmesan cheese. Spread over tortilla to within 1/2 inch (1 cm) of the edges. Top with sliced turkey, red onion, spinach, sliced cheese and tomato slices, layered in the order listed in a row along the center one-third of the tortilla. Sprinkle lightly with salt and pepper to taste. Roll the tortilla up tightly to enclose the filling, then cut in half crosswise. Eat

immediately or wrap both halves in plastic wrap and pack in a lunch bag. Servings: 1

How Kids can Help: Mix together the mayonnaise and cheese mixture and spread on tortilla. Layer filling ingredients and roll up tortilla (with some adult help).

School Lunch Advice for Kids at Every Age

Try the tips below to make your child's lunch healthy and worth looking forward to.

For Home-Packed Lunches: Avoid the morning rush by preparing lunch the night before and chilling it in the refrigerator.

Put slices of tomatoes in a separate bag or container so they don't make sandwiches soggy.

Instead of potato or corn chips, pack a healthier alternative like veggie chips, bagel rounds, or baked tortilla crisps.

Round out the meal with kid-sized veggies—baby carrots, celery sticks, or broccoli florets—and a low-fat or fat-free dip.

Low-fat, high fiber mini muffins make a great dessert alternative to cupcakes or high-fat cookies.

Use a cookie cutter to transform a plain square sandwich into something unique.

Turn a container of low-fat yogurt into a complete meal by sending along some stir-ins like granola, trail mix, unsalted chopped nuts, or whole grain cereal.

Consider alternatives to sandwich bread like burger buns, pita rounds, soft tortillas, and large lettuce leaves (for a non-soggy wrap for savory fillings).

For School Cafeteria Lunches: Look over the cafeteria menu with your child ahead of time. Try to agree on items your child like and that are healthy. Early in the school year, try to arrange to have lunch with your child at the cafeteria. Use this as an opportunity to model your own healthy food choices.

Ask the school's parent-teacher group to arrange a presentation by the food service department. Express your interest in ensuring that healthy food choices are offered in school cafeterias and vending machines.

Learn more about new laws requiring healthier school lunches at the Healthy Meals Resource System website:
http://healthymeals.nal.usda.gov/nal_display/index.php?info_center=14&tax_level=1.

Tips for Safe Brown Bag Lunches: To prevent food-related illness, follow the guidelines below when preparing and packing brown bag lunches.

Watch the temperature. Harmful bacteria grow best between 40 degrees F and 140 degrees F, so it's important to keep perishable foods outside this danger zone as much as possible. Foods susceptible to bacterial growth—especially high protein foods like meat, poultry, fish, dairy products, and eggs—should never be in the danger zone for more than two hours (one hour in warm weather conditions). Foods destined for the lunch box should be kept in the refrigerator until just before your child leaves for school.

To maintain lunch food at a cool temperature, pack a frozen juice box or water bottle in an insulated lunch bag; you can also use a freezable gel pack. Try to position the coldest item at the top of the

bag since cool air settles.

Hot foods are a real challenge in a lunch box. In many cases, it is difficult to maintain a high enough temperature. If you want to try sending soup or similar foods, do a "dry run" at home some morning. Pre-warm an insulated Thermos container (following the manufacturer's instructions), then fill with the hot food. Seal the container and let it sit until about an hour before your child's lunch time, then open it and measure the temperature of the food. If the food is below 140 degrees F, it may not be safe to eat.

Keep it clean. Always wash your hands (and your child's) before preparing food. Wash them again after handling eggs or raw meat so you don't cross contaminate other foods or surfaces. Be sure that utensils, counters, and cutting boards are also clean when you begin. If raw meat or eggs touches a surface, clean it with warm soapy water before allowing another food to come in contact with it.

Be aware of food hazards. Some common lunch foods pose health hazards than you might not expect. Some of the most common include:

- Uncooked eggs may be contaminated with salmonella. Young children are especially susceptible to this harmful organism, so avoid giving them foods like homemade mayonnaise or uncooked eggnog.

- Children who are allergic to peanuts can have a life-threatening reaction to even microscopic amounts. This is why

some schools have banned foods that contain peanuts. Unfortunately, many processed foods contain trace amounts of peanuts, even if they aren't listed on the ingredient label. If your child attends school with a youngster who has a peanut allergy, be sure to pay attention to any guidelines given to you by the school. (To learn more about peanut and other food allergies, visit: <http://www.nlm.nih.gov/medlineplus/foodallergy.html>)

- Albacore tuna—so-called "white" tuna—has relatively high levels of mercury. Though not considered dangerous for most adults, young children and pregnant women should avoid eating more than one meal (about six ounces) of albacore per week. Shrimp, canned light tuna, salmon, pollock, and catfish have less mercury, and are safe for up to two meals per week.

*School Lunch Tips and Brown Bag Safety By Paul Krantz / Turkey Sandwich Wrap and Banana Dog in a Bun recipes by Stella Zedman // Copyright © Disney. All Rights Reserved. *Updated on June 1, 2009*

NOTE: RECIPES AND CONTENT ARE PROVIDED ON AN "AS IS" AND "AS AVAILABLE" BASIS WITHOUT WARRANTIES OF ANY KIND, EITHER EXPRESS OR IMPLIED, AND YOU AGREE USE OF THESE RECIPES AND/OR CONTENT IS AT YOUR SOLE RISK.

LaParolaccia
Osteria Italiana

Nicola & Stefano
Chefs - Owners
Now open for lunch
Saturday & Sunday
2945 East Broadway
Long Beach, California 90803
562.438.1235
www.LaParolacciaUSA.com

YOUR
Color Diva
COLOR CONSULTANT

Residential
Commercial
& Beyond

Want more color in
your life?
Too many paint choices?
We are here to help!

562.427.0440
YourColorDiva@aol.com
www.yourcolordiva.com

Shoshanah Siegel
Owner

We do staging, too!

Paradise
Piano Bar &
Restaurant

*A Fine Dining Experience
with Great Nightly
Entertainment*

*Proudly featuring
the Menu of
Executive Chef
Veronica Organista*

*Brunch Served
Saturday & Sunday
10 am to 2 pm*

*1800 E. Broadway, Long Beach
Reservations: 562-590-8773
www.paradisepianobar.com*

domaSM



Steven Nottingham

office 562.481.3865
cell 562.754.1333

Work with an
agent who truly
cares about his
client's well being.

Call Today For A
Home Valuation!

sjnottingham@domaproperties.com
www.domaproperties.com

Historically Accurate



Custom Doors
Wood Windows
Period Lighting
Decorative
Hardware



Call Today!

Sales & Installation
Lic: B893650

BnBHardware.com



B & B HARDWARE



387 Redondo Ave. 562-438-2669



JEFF ANDERSON
REALTOR[®]

- Customized Home Marketing
- Customized Home Search
- Free Home Market Analysis

Century 21
BEACHSIDE



o: (562) 430-2121
c: (562) 533-4922

JEFFANDERSONREALTOR.COM

Going out of town?

CALL PET/HOUSE SITTING BY SUZI

- All pets
 - In your home
 - Dog walking
 - Feeding & Medications
 - Plants, Mail etc.
- Overnight (\$35) Daily visits (\$15)
Cell 562.818.8012

"All they need is love"



YOU ARE ONLY ONE CLICK AWAY
FROM VIEWING THOUSANDS OF HOMES FOR SALE!

www.LongBeachHomeBuyersGuide.com

I'm your neighbor at 302 Orizaba Ave.

Mike W. Norton

562-577-5021



BUNGALOW KEY



INTERIOR-EXTERIOR DESIGN & CONSULTATION
KEVIN DOHERTY 562-434-1942

**mamelli Professional
Painting & Building Contractors**

General Building Repair and Maintenance
35 Years of Historical Restorations
Skilled Tradesmen- Superior Workmanship

Randy Mamelli

State Lic. B-1 & C-33 301965
Email: mamellipainting@verizon.net

Office Fax: 562 433-5896

Cell: 562 706-0844

PARTICIPATE IN YOUR NEIGHBORHOOD

- Join! See application below.
- Attend a board meeting
- Join a committee
- Advertise in our newsletter
- Submit an article for our newsletter

Contact us at (562) 439-BHNA (2462) or
 MyVoice@bluffheights.org
 www.bluffheights.org

MEMBERSHIP APPLICATION

Joining or renewing with the Bluff Heights Neighborhood Association brings you the following benefits:

- Your dues go to neighborhood beautification and improvements
- Access to resources and educational opportunities
- Your voice is heard by the BHNA
- Involvement in your community through volunteer and leadership opportunities
- Supporting local businesses through your involvement
- Voting rights in BHNA Elections



Name(s): _____

Address: _____ Zip: _____

Phone: _____ Cell Phone: _____

RENEWAL or NEW MEMBER

The most efficient way to get information to you is through e-mail.
 Please provide your current e-mail address:

Email: _____

Please check the committee(s) you would be interested in joining:

- Membership and Recruitment
- Nominations Committee
- Community Outreach
- Public Affairs
- Historic Preservation/Beautification
- Traffic/Streets/Safety
- 4th of July Block Party
- Newsletter/Web Production
- Horace Mann School Projects
- General Meeting Planning
- Other

May we give you a call or e-mail if we need volunteer help? Yes

Please send a check for \$25 made payable to BHNA and mail to:

BHNA - ATTN: Membership
 375 Redondo Ave. #299, Long Beach, CA 90814
OR renew online through Paypal at
www.bluffheights.org



KafeNeo

American Kitchen with Greek Soul

- BREAKFAST
- LUNCH
- DINNER
- COFFEE BAR

Now serving select wines & beers

A neighborhood café in Bluff Heights serving Greek Cuisine along with American Classics.

Casual, Modern Dining.
 Fresh, Healthy & So Good.

Come see what the neighborhood is talking about!



CORNER OF 4TH & TEMPLE
 562.987.1210
 KAFENEOLB.COM

SCHELIN :: HOMECRAFT

Design and Fabrication

Garden Gates - Fences - Decks - Pergolas - Screen Doors



Lee F. Schelin
 562.833.2430
 LSchelin@charter.net

CA License 873794





\$5.00 off
First Visit*

Grooming
Food
Supplies



LauderPet
 www.lauderpet.com

Belmont Heights • 3429 E. Broadway • Long Beach • 562-433-3605
 Seal Beach • 318 Main Street • Seal Beach • 562-430-7196
 Bixby Knolls • 4102 Orange Ave. #113 • Long Beach • 562-427-2551



NEIGHBORHOOD ASSOCIATION

375 Redondo Avenue #299
Long Beach, CA 90814

NONPROFIT ORG
U.S. POSTAGE
PAID
LONG BEACH, CA
PERMIT NO. 1688

IN YOUR NEIGHBORHOOD



School Building
It may not be the White House, but for Bluff Heights, it's surely close enough, and check out that Art Deco architecture. Is this really our little Horace Mann Elementary school, or a Parisian conservatory?



Playground Activity
Item Recently, there was a UFO spotted in Bluff Heights. To maintain calm, the U.S. government is trying to suppress this finding; however, a quick walk by the perimeter of the fenced playground area at Horace Mann Elementary will certainly prove otherwise!

Bluff Heights Neighborhood News is a quarterly publication of the Bluff Heights Neighborhood Association. All residents are invited to contribute articles and opinions. We reserve the right to edit for clarity and brevity. Opinions expressed are not necessarily shared by all residents, nor the editor. Our goal is to provide a voice to our community, keeping residents informed of issues affecting the quality of life in Bluff Heights.