

IT'S A BEAUTIFUL DAY IN OUR NEIGHBORHOOD



Living in a Historic District: What You Must Know and Why

February 16, 2011



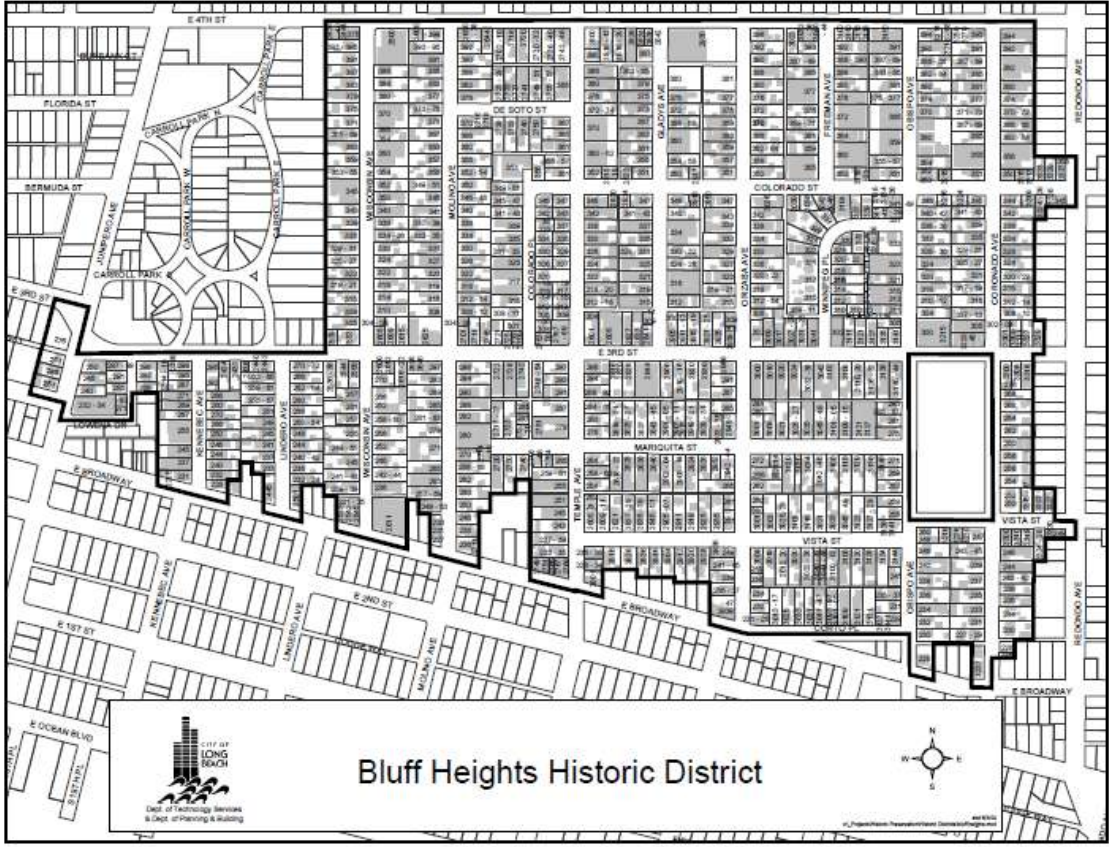
Agenda

- ❖ Opening Remarks & 2011 BHNA Officers
- ❖ Bluff Heights Map & BHNA Mission
- ❖ Reports from the 2nd & 3rd Council Districts
- ❖ Police Department Area Update
- ❖ Horace Mann Elementary Update & Donations
- ❖ Living in a Historic District:
What You Must Know and Why
- ❖ Bike Long Beach & Bike Blvd. Update
- ❖ Bixby Park Update
- ❖ Neighborhood Partner Report:
Spa Sidney & “On Broadway”
- ❖ Q&A



2011 BHNA Officers

❖ John Thomas	President
❖ Dale Maul	Treasurer
❖ Bill Garlin	Secretary
❖ Frank Ginipro	Board Member
❖ Antonio Cruz	Board Member



Map & Mission

“The Bluff Heights Neighborhood Association is a non-profit, volunteer organization dedicated to community building, education, historic preservation, public safety, neighborhood beautification and thoughtful growth designed to enhance the quality of life among its residents.”



Reports from the 2nd & 3rd Council Districts



Long Beach City Council District 2 - Suja Lowenthal

Long Beach City Council District 3 - Gary DeLong



Police Department Area Update





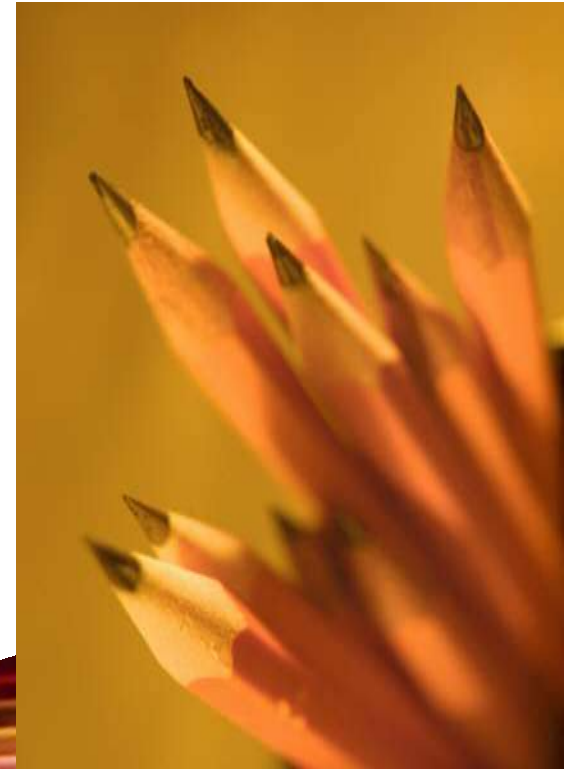
Horace Mann Elementary Update

- ❖ The latest school happenings from Principal Wanda Oliver



Horace Mann Donations Needed

- ❖ Copy paper -
(white & colored)
- ❖ No. 2 pencils
- ❖ Dry erase markers -
(black, blue, green & red)
- ❖ Hand sanitizer
- ❖ Facial tissue





Living in a Historic District

What you must know and why:

- ❖ The newly adopted Historic Preservation Element to the City's General Plan
- ❖ The projects and scope of work required to have building permits and *Certificate of Appropriateness*
- ❖ Is your home a “contributing asset” to the neighborhood?

Cont'd...



Living in a Historic District

What you must know and why (cont'd):

- ❖ The necessary permit and project review process to achieve the *Certificate of Appropriateness*
- ❖ The required fees and other related paperwork required for project submittal
- ❖ The important role of City Staff and the Cultural Heritage Commission in the project review and approval process



Bixby Park Update





Bike Long Beach & Bike Blvd. Update

- ❖ Opened the Vista Bike Boulevard on December 12, 2010, the first of its kind in southern California
- ❖ Installed bike corrals in the East Village and upper Pine, with more on the way
- ❖ Began construction of a new Bikestation on the Promenade
- ❖ Began construction of protected bike lanes on Broadway and 3rd Street downtown; due for completion in the first quarter of 2011

(cont'd)





Bike Long Beach & Bike Blvd. Update

- ❖ Worked with Caltrans to add bike lanes on PCH from the Traffic Circle south to Orange County
- ❖ Implemented youth bike safety education classes, in which every elementary and middle school student will have participated by the end of 2012
- ❖ Provided “The Cruiser Sessions,” with Long Beach Bike Ambassador (and BHNA Board member) Tony Cruz, every Thursday night to promote cycling for people of all ages
- ❖ The update of the bike master plan is also getting started with community meetings throughout the city from January through March 2011





Neighborhood Partner Report



IT'S A BEAUTIFUL DAY IN OUR NEIGHBORHOOD



Q & A

IT'S A BEAUTIFUL DAY IN OUR NEIGHBORHOOD



Next meeting is May 18, 2011